

HOUSING, DINING, AND RECREATION

Orientation

2025-2026



TABLE OF CONTENTS

Miami Dining Services 1

Campus Services Center 7

Mail and Package Center 13

Brick & Ivy Campus Store 15

Recreation Center 17

Goggin Ice Center 18

Student Employment 20





DINING SERVICES

MIAMI DINING SERVICES

Bell Tower 401 E. High St.
MiamiOH.edu/dining

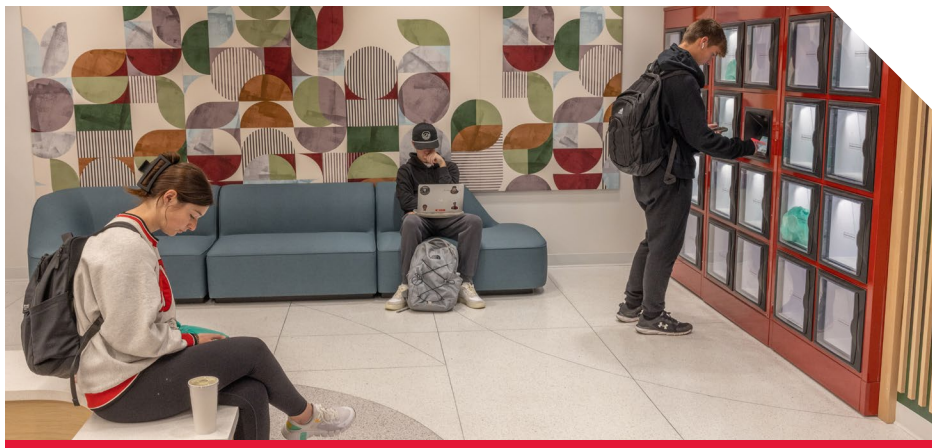
Our Services

Miami University Dining Services takes pride in serving the needs of over 17,000 students, staff, and faculty every day across more than 20 locations. Our commitment to quality and service is reflected in our well over 13,000 meal plan holders. We strive to provide our customers with a diverse range of options that cater to different tastes and dietary needs.

Whether it's a quick snack, a full meal, or a hot cup of coffee, we have you covered. With a team of dedicated professionals, we are passionate about ensuring that every dining experience is enjoyable and meets our customers' needs. Our focus on quality, service, and innovation has made us a leader in the industry, and we are proud to be a part of the Miami University community.

Dining Events

Miami Dining is more than just meal swipes and Dining Dollars—it's also a hub for fun events and delicious culinary experiences. From local business showcases to chef-led Teaching Kitchens, culinary pop-ups, cultural celebrations, food-inspired DIY events, and our campus-wide JoyFUL celebrations, there's always something exciting happening within our dining spaces. With a focus on creating a vibrant dining community, Miami Dining is more than just a place to grab your next meal—it's a place to connect with friends, try new foods, and make lasting memories. Join us for our next event and experience the best of Miami Dining!



ON-CAMPUS DINING LOCATIONS

ARMSTRONG STUDENT CENTER

550 E. Spring St.

Order ahead with Grubhub mobile or kiosks at Armstrong Student Center dining spots.



Chick-fil-A

Coming to Armstrong Student Center, students will soon be able to enjoy one of the nation's most popular fast food spots right on campus. Famous for its chicken sandwich, crispy waffle fries, and hand-spun milkshakes, this new addition brings signature Southern hospitality to the heart of Miami. Whether you're grabbing a quick bite between classes or catching up with friends over a meal, it's sure to become a go-to dining destination.



Ciao Bella

Say "ciao" to a delicious journey of classic Italian flavors. Ciao Bella offers a menu inspired by traditional ingredients and bold international flavors, bringing a fresh take on beloved Italian favorites.



Emporium

Visit our campus market for a quick snack or to stock up your pantry with all your favorite goodies. We also offer a variety of delicious

meals ready to go, available for purchase with Dining Dollars or a meal swipe—plus a selection of your favorite Pepsi beverages to pair with any meal!



Panera Bread

Known for its freshly baked goods, soups, salads, and sandwiches. Panera offers a diverse menu of quality ingredients catering to various tastes and dietary preferences!



PULLEY DINER

Pulley Diner

Embrace a classic '50s diner vibe, serving all-day breakfast and burgers made from fresh, never frozen beef. Enjoy a delicious milkshake, your favorite Pepsi beverage, or don't miss the traditional toasted roll—a sweet Miami favorite served warm and buttery. Step into the nostalgic ambiance of a true diner experience with a modern twist!



Sumeshi

Enjoy made-to-order sushi, specialty rolls, and flavorful bowls—all crafted fresh just for you. You'll find this sushi favorite on the lower level of Armstrong, inside Bell Tower, and in all on-campus markets.



BELL TOWER

401 E. High St.

Bell Tower offers a modern, mobile-order dining experience with three distinct cuisines all under one roof—Tower Grill, Southwest Express, and Athenian Grill, featuring authentic Greek dishes. You'll also find a dedicated cooler for Sumeshi specialty sushi and a Starbucks conveniently located next door.

Order ahead through the Grubhub app and pick up your food from secure food lockers, have it delivered by Starship robots, or enjoy your meal in the spacious Bell Tower dining room. Students can use their meal plan with Dining Dollars or choose from select meals available for a meal swipe.



DIVIDENDS

800 E. High St. - Inside Farmer School of Business

Located in the Farmer School of Business, Dividends offers five unique stations. Customers can build their own entrée salads from an extensive selection of toppings at Traders' Greens, enjoy a freshly-pressed sandwich at Panini Portfolio, pick up a poke bowl at the Asian Market, grab a hot soup at Preferred Stock, or caffeinate their day with a specialty Miami Grind coffee from Fiscal Grind.

For students on the run, a variety of convenience items, grab-and-go sandwiches, and salads are available.

GARDEN DINING COMMONS

95 N. Patterson Ave.



Garden Commons

Garden Dining Commons

Take a trip through the seasons while you experience the beauty of Miami's campus and an extensive menu to match! This buffet-style dining commons features six stations including traditional comfort foods, Italian, grill favorites, fresh salad bar, global flavors, and sweet treats.

At Garden Dining Commons, you'll be introduced to the Planet Eats dining concept—featuring food that is both healthy and delicious. Around every corner, you'll discover dishes that support our commitment to sustainability and positively impact the planet.



PATIO Grill

DELICIOUSLY FRESH - ALLERGEN FREE

Patio Grill

Patio Grill, a new dining concept launching in fall semester 2025, will serve fresh, made-from-scratch meals free from the top nine food allergens (milk, wheat, egg, soy, peanuts, tree nuts, fish, shellfish, and sesame) and gluten. Designed to provide a safe and convenient option for those with dietary needs, Patio Grill makes it easy to grab and go—meals will be available for pick-up in secure food lockers.



MAPLESTREET COMMONS

MAPLESTREET DINING COMMONS

571 Maple St.

Maplestreet Dining Commons is a buffet-style dining commons that offers an expansive range of cuisines and themes, including rotating global cuisines, vegetarian options, shaken salads, a New York-style deli, and classic favorites such as pizza, pasta, burgers, delicious baked treats, and an allergen-friendly station, Delicious Without, located in its own designated area, providing a worry-free experience by meticulously preparing foods without the nine major food allergens (milk, wheat, egg, soy, peanuts, tree nuts, fish, shellfish, and sesame) and gluten.

At Maplestreet Dining Commons, you will be introduced to the Social House dining concept, a dining experience that is packed with fun and delicious vibes. Social House goes beyond the great food and provides a space that sparks connections, conversations, smiles, and laughter that encompass the Miami Dining experience.



MARKET STREET AT MACCRACKEN

500 Center Dr.

As the largest market on campus, Market Street at MacCracken offers a wide variety of packaged foods and everyday essentials—including a selection of locally produced items and your favorite Pepsi beverages.

Beyond traditional market goods, you'll find satisfying meal options like classic breakfast favorites, made-to-order burgers, and loaded fries from the grill. The cafe serves up freshly brewed Miami Grind coffee, blended smoothies, and irresistible sweet treats.

Select meals and grill items can be purchased using a meal swipe or Dining Dollars, making Market Street at MacCracken a convenient go-to for any time of day.



SCOREBOARD MARKET

5397 Bonham Rd. - Inside Martin Hall

As the go-to market in North Quad, Scoreboard offers a large variety of packaged foods and beverages as well as made-to-order sandwiches, sides, and appetizers that you can order through the Grubhub app and pick up in secure food lockers. Meal swipe equivalent options are also available, making it easy to grab a meal on the go.



STARBUCKS

401 E. High St. - Inside Bell Tower

701 E. Spring St. - Inside the Shriver Center

201 Tallawanda Rd. - Inside Withrow Hall

With three Starbucks locations on campus, you're never far from a specialty coffee, tea, or snack. The Shriver and Withrow locations are full-service cafes with outdoor seating and convenient access to nearby academic buildings and student housing. Starbucks at Bell Tower is a mobile pickup and robot delivery location only, with ordering available exclusively through the Grubhub app.

WESTERN DINING COMMONS

480 Western Dr.



Greystone

Located inside Western Dining Commons, Greystone offers a wide variety of snacks, drinks, everyday essentials, and packaged meals to go.



Western Dining Commons

Western Dining Commons offers more than just delicious food. As a LEED Certified Silver Building, it's also a model of sustainability. At this concept, United Table, choose from a diverse range of globally-inspired cuisines including Mediterranean, Latin, Asian, Italian, and American favorites at this buffet-style dining commons. You can also find another

Delicious Without allergen station providing salads, comfort food, and build-your-own bowls made without the the nine major food allergens (milk, wheat, egg, soy, peanuts, tree nuts, fish, shellfish, and sesame) and gluten.

The spacious dining area features an abundance of natural light and modern decor, making it the perfect place to gather with friends or take a break from a busy day.

DINING ACCOMMODATION NEEDS

Miami Dining is committed to going above and beyond expectations to ensure students can dine safely on campus regardless of dietary needs. We assist students with a wide variety of dietary restrictions including food allergies, intolerances, and medical needs through a partnership with the Miller Center for Student Disability Services. We also take into consideration cultural backgrounds, religious affiliations, and lifestyle choices.

Discover comprehensive dietary resources for students using our Dine on Campus app. Explore hours of operation, locations, and their corresponding menus. Nutritional information is available for each item on the menu.

Nut-Friendly Dining Commons

We are a "nut-friendly" campus which means that we do not use peanuts or tree nuts in our kitchens or food preparation areas. We take precautions to review food labeling to ensure that no menu items or ingredients contain peanuts or tree nuts.

This includes all of our dining commons and most retail spaces, though we do carry sealed nut products in our markets and our "nut-friendly" initiatives do not apply to Starbucks, Panera, or Chick-fil-A. Please note, we cannot guarantee that individuals will not bring foods containing nuts into the dining commons or other campus locations.

Meal Plans

Depending on the level you choose, you'll receive a set number of meal swipes each week. Unused meal swipes do not roll over from week to week.

However, students on the Diplomat Minimum, Plus, and Standard plans receive a special Bonus Week—an extra week's worth of swipes that do roll forward throughout the semester.

Your meal plan also includes Dining Dollars, which can be used at various dining locations on campus. For continuing students, any unspent Dining Dollars will automatically transfer to your plan for the next semester. We recommend monitoring your balance regularly and budgeting carefully, especially if you're considering adding more funds before the end of the semester.

Meal plans are designed to give you flexible dining options all semester long. If your current plan isn't the right fit, you can change it until the first day of the semester (fall and spring) by logging into your housing portal or contacting the Campus Services Center.

Grubhub Mobile Ordering

Skip the lines and save time by ordering ahead at select campus dining locations through the Grubhub app—including favorites like Bell Tower and the dining concepts inside Armstrong Student Center. With helpful features like menu browsing, order tracking, and meal customization, Grubhub makes campus dining quick and convenient.

Want to take it a step further? Use Grubhub to order delivery from Bell Tower via our Starship robots! These high-tech helpers are stationed at Bell Tower and can deliver your meal straight to your location on campus. Just order through the app and let the robot do the rest—it's a fast, fun, and efficient way to enjoy your favorite meals on the go.

To use your meal plan in the app, select "On-Campus Dining" and choose **Miami University** as your campus. Then, link your Miami ID to access your meal swipes and Dining Dollars right from the app.

Meal Swipe Equivalences

Select campus markets and dining locations—like Bell Tower, Scoreboard Market, and Market Street at MacCracken—offer hot meals that can be ordered ahead using a meal swipe in the Grubhub app. These convenient options give students added flexibility to enjoy quick, satisfying meals on the go.

Meals To Go Program

For quicker on-the-go options, all market locations offer Meals To Go that can be purchased with one meal swipe. Meals To Go are available for breakfast, lunch, and dinner and includes the choice of any Sprig & Sprout entrée (marked with a green sticker), piece of fruit or 1.5 oz bag of any flavor Frito-Lay chips, and Miami bottled water. Made-without-gluten options are also available.

Vending on Campus

There are over 200 vending machines across campus, conveniently located in most residence halls and academic buildings. Stocked with a wide variety of beverages, snacks, healthy options, and more, these machines are available 24 hours a day to keep you fueled anytime. Multiple payment methods are accepted, including Dining Dollars, MUlra, Apple Pay, Google Pay, and credit/debit cards—no cash needed, as we are a fully cashless operation.

** Dining concepts and offerings are subject to change at any time.*



CAMPUS SERVICES CENTER

CAMPUS SERVICES CENTER

Nellie Craig Walker Hall
301 S. Campus Ave., O34

[MiamiOH.edu/campus-services](https://miamiOH.edu/campus-services)

2025–2026 Meal Plans

Whether you're looking for flexibility, transparency, or simplicity, we've got the perfect plan for you. Our Diplomat Meal Plans combine meal swipes with Dining Dollars, so you can enjoy a wide range of dining options across campus. And with our easy-to-use system, you'll be able to focus on what really matters: enjoying your meals! Learn more about your meal plan options below, and also be sure to explore dining options in the "Places to Eat" section of our Miami Dining website at [MiamiOH.edu/dining](https://miamiOH.edu/dining).

Meal plans are available to all Miami University students, and are required for all students living in residence halls. Students can change their meal plan selection up to the first day of each semester. You can log in to your housing portal to update your meal plan selection at [MiamiOH.edu/housingportal](https://miamiOH.edu/housingportal).

Meal Plan Options for 2025–2026*

Level	What's Included Each Semester
Diplomat Premium	Provides unlimited meal swipes for you, \$800 Dining Dollars, and 5 guest meal swipes. Rest assured that you can eat at buffets as often as you'd like, and also use your Dining Dollars at any dining location on campus.
Diplomat Plus	Provides 7 meal swipes per week, \$1,100 Dining Dollars, and 5 guest meal swipes. This plan also provides a bonus week's worth of meal swipes that can be used at any time during the semester!
Diplomat Standard	Provides 16 meal swipes per week, \$500 Dining Dollars, and 5 guest meal swipes. This plan also provides a bonus week's worth of meal swipes that can be used at any time during the semester!
Diplomat Minimum	Provides 14 meal swipes per week, \$100 Dining Dollars, and 5 guest meal swipes. This plan also provides a bonus week's worth of meal swipes that can be used at any time during the semester!

* At this time, the Board of Trustees has not finalized meal plan prices. Please visit [MiamiOH.edu/mealplans](https://miamiOH.edu/mealplans) for the most up-to-date pricing information.

MUlaa

MUlaa is an on-campus debit account that is used for the residence hall laundry machines, RedHawk retail locations, MU Box Office, MUPrint printers and copiers, vending machines, and more.

To preload your account before school starts, sign up through your online housing application.

To deposit additional money into an account, simply access the One Stop website at [MiamiOH.edu/onestop](https://miamiOH.edu/onestop).

MUlaa is refundable.

To view transactions and balances visit [WebCardCenter.MiamiOH.edu](https://webcardcenter.miamiOH.edu).

Residence Hall Staff

The Residence Life staff includes full-time professionals, graduate students, and undergraduate students.

A Resident Assistant (RA) lives in each residence hall corridor to help students make the transition from high school to college and to plan special events so students get to know one another. These carefully selected and trained upperclass students are also familiar with the scheduling process and often share their own knowledge and experience.

A Resident Director will live in your community as well. They will help shape the environment and experiences of residential students.

Room Assignments

During the summer, our office works diligently to finalize housing assignments. We strive to meet as many preferences and requests as possible. In order to meet the most preferences, our process takes the majority of the summer.

Room assignment information for incoming first-year students is sent out by email in late July/early August.

Living Requirements

At Miami, we highly value the residential experience for student success. All first-year and second-year students are required to live on campus unless they meet one of the following criteria:

- At least 21 years of age before the first day of class.
- Have matriculated full time, after high school graduation, for at least two years at another institution of higher education or a regional campus.
- Reside with their parents or legal guardians, who had guardianship at the time of admission, and live within 50 miles of the Oxford campus.
- Reside with spouses or dependent children during the academic term and commute to campus.

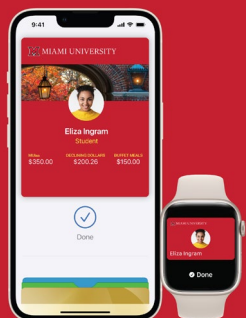


■ Miami Digital ID

Miami University has implemented the Miami Digital ID as an official form of identification. Utilizing the Miami Digital ID ensures you are never without your key to campus.

The Miami Digital ID is available at no cost to all students and is the default form of ID for incoming students. The ID provides access to residence halls, campus buildings, meal plans, Recreational Sports Center, MUlaa, library resources, and more.

Using Digital ID is easy, and directions for loading Digital ID directly from the GET app can be found at MiamiOH.edu/digitalid. An approved photo must be uploaded to the GET app before Digital ID can be loaded onto your smartphone or smartwatch. Photo approval could take 24–48 hours. **Be sure the Digital ID is loaded on your device before you arrive for move-in.**



Miami University Your Miami ID. On your phone.

Getting around campus is easier with Miami ID on your mobile devices.

Download the GET app to get started.

■ Airport Shuttles

Airport shuttles with multiple departures and returns to and from the Cincinnati (CVG) airport are offered for Thanksgiving, winter break, and spring break using professional charter coaches at a cost of only \$40 each way (inclusive of rider and luggage). Visit MiamiOH.edu/shuttle for more information.



■ Learn More

If you have any questions, do not hesitate to contact the Campus Services Center at CampusServicesCenter@MiamiOH.edu or in person in room 034 of Nellie Craig Walker Hall.

HOUSING FAQs

■ When will I find out where I'm living?

Housing assignment information will be emailed to your Miami account in late July/early August.

■ How large are the residence hall rooms?

The size of our rooms varies from one residence hall to another, as a result of architectural differences. You will receive the dimensions of your room when you get your assignment in late July/early August. The majority of rooms are multiple occupancy rooms for two people.

■ Do I need to purchase property insurance?

Miami does not assume responsibility for the loss of money or valuables, damage to property, or injuries on the premises. If you are not covered under your parent/guardian homeowner's insurance policy, we strongly recommend that you make arrangements for insurance protection against such losses, such as renters insurance.

■ Will I have internet in my room?

Yes, each room has both wired and wireless connectivity providing access to the internet and local network resources.

■ What linens will I need?

You'll need to provide your own pillows, blankets, and sheets (which fit an 80" x 36" XL twin mattress). You and your roommate(s) may want to coordinate bedspreads and additional items to decorate your room.

■ What furniture is provided?

All rooms are furnished with beds, dressers, desks, desk chairs, bed rails, trash can, recycling can, and closets or wardrobes. Due to campus storage space limitations, requests to remove university provided furniture cannot be accommodated. Students are discouraged from bringing their own furniture to campus. Typically, rooms can only safely accommodate the furnishings provided.

■ What appliances can I use in my room?

Approved appliances for use in student rooms include stereos, televisions, computers, fans, clocks, lamps, irons, blow-dryers, curling irons, single-serve contained coffee makers, and powerstrip cords with built-in circuit breaker. All items must be Underwriters Laboratory approved.

■ What items can I not use?

The following items are prohibited in your room: private loft beds, bed risers, electric blankets and sheets, hot plates, sun lamps, candles, electric skillets and grills, toaster ovens, toasters, popcorn poppers, open hot pad coffee makers, halogen lamps, wireless routers, wireless printers, non-circuit breaker equipped extension cords, water beds, e-bikes, e-scooters, electric skateboards (due to lithium battery safety hazards), personal mattresses, wall mounts for televisions, 3D printers, personal refrigerators, and personal air conditioners.

■ What can I use to hang items on my walls?

You may decorate your walls using molding hooks ("S" hooks), twine, and reusable poster putty. Due to the room damage they create, Command Strips, Scotch tape, duct tape, adhesives, tacks, nails, screws, or pins may not be used for any purpose (students are responsible for room damage including the room door).

**LED lights are not recommended for use in the residence hall rooms as the double-sided tape used to attach them to the walls will cause damage resulting in damage fees. Residents are responsible for any repairs/damages regardless of supplies used if damage results.*

Room decorations must not be affixed to or suspended from the ceiling, light fixtures, smoke detector, occupancy sensors, or sprinkler heads. You may be held financially responsible for the repair and clean-up resulting from an unintentional/intentional activation of a sprinkler head.

Can I park on campus?

A parking permit is required to park on Miami University's campus at all times unless in a garage or at a meter. First-year students are restricted from having a car on campus unless their permanent home address is outside of a 200 mile, *straight line radius* from the university, or if they have filled out an exceptional transportation need (ETN) request form and it has been approved. These requests typically relate to a medical need, an off-campus job, or a class on another Miami campus. ETN's for the 2025–2026 academic year will begin to be accepted on August 1. Please contact the Campus Services Center at 513-529-5000 or visit our website at [MiamiOH.edu/parking](https://miamiOH.edu/parking) for questions concerning eligibility for or purchasing parking permits.

Can I have a pet?

Pets are not permitted in the residence halls, except for small fish. Tank size cannot exceed five gallons, and tank heaters are not allowed.

What if my roommate and I do not get along?

Roommate conflicts are mediated by your Residence Hall Director and Residence Life staff members, who encourage open communication between roommates to come to a mutual resolution.



Join the Club

Save 10% off every night you stay at The Marcum.
All current Miami University parents are eligible.

- Conveniently located on campus near the Farmer School of Business
- 55 guest rooms
- Conference facilities and catering services available

REGISTER ON OUR WEBSITE MiamiOH.edu/Marcum

BASED ON AVAILABILITY
Not valid on Family Weekend and Commencement

951 E. Withrow St., Oxford, OH 45056 | 513-529-6911



Books by **eCampus**
—campusstore.miamioh.edu—

Welcome

to Miami University's Official Online Bookstore

Order books online &
ship to Brick & Ivy

- + The right professor-selected course materials guaranteed
- + Free 1-day shipping to Brick & Ivy Campus Store*
- + Risk-free early ordering; returns up to 30 days after classes begin
- + Save up to 80% with the largest rental availability (Amazon doesn't have that!)



campusstore.miamioh.edu



*Excludes Marketplace Purchases
Questions? campusstore.miamioh.edu/help

Powered by
eCampus.com



MAIL AND PACKAGE CENTER

MAIL AND PACKAGE CENTER

Shriver Center, 701 E. Spring St., 113
513-529-9221
MiamiOH.edu/mail

HOURS OF OPERATION

Smart Locker Access

Monday-Sunday
24 hour access

Customer Pickup Window

Monday-Friday	Saturday
8 a.m. to 5 p.m.	11 a.m. to 2 p.m.

U.S. Post Office

Monday-Friday
8 a.m. to 4 p.m.
(money orders available)

Smart Lockers

The Mail and Package Center receives packages for students living on campus in university residence halls during the academic year.

Due to the high volume of packages received on a daily basis:

- Packages will be held for 24 hours in lockers.
- An email will be sent with locker codes and location for pick-up.
- If not picked up from locker in the first 24 hours, the package is then moved to the Customer Service Pickup Window for an additional 48 hours.
- After 72 hours, the package is returned to sender unless special arrangements have been approved for additional holding.

Receiving

As a student, you may receive mail from two different locations on campus:

Your mailbox at your residence hall

- All letter-size mail, newspapers, and magazines will be delivered to your residence hall mailroom.
- Sorted into your mailbox by RAs by 8 p.m. on Monday and Thursday.

Mail and Package Center

- For all packages, letters that require a signature, or anything too large to fit in your residence hall mailbox.

Mail Forwarding

- During Winter Term and Summer Term, letter mail will be forwarded to your home address.
- Contact the Mail and Package Center and request to continue your mail if you stay on campus during Winter Term and want to continue to receive mail on campus.
- Mail will be available for pickup at the Mail and Package Center.
- Students graduating, leaving the university, or who will be living off-campus the next term must notify all correspondents of their new address.
- Mail will no longer be forwarded for these students after the first day of the academic year in August.

Resident Mailing Address

Your Name (include middle initial)
Hall Name and Room Number

Hall Street Address
Oxford, OH 45056

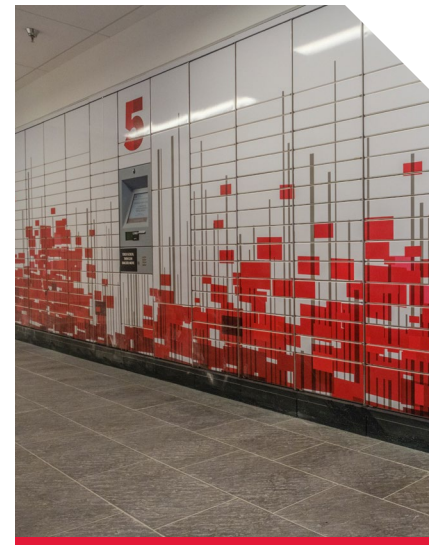
Package Forwarding

Residents must stop by the Mail and Package Center before leaving campus and pick up any remaining packages being held.

Any items that have not been picked up by the first day of summer will be returned to sender (RTS).

During summer, packages received from the U.S. Postal Service will be forwarded to student's registered home address, along with all other U.S. mail.

All other shipping companies such as FedEx, UPS, and DHL charge additional fees for forwarding packages. Packages delivered by these carriers will be refused. Contact Amazon, FedEx, LaserShip, UPS, or DHL directly to make arrangements for forwarding.



How to Use the Smart Locker System

Notification of packages placed in the Smart Lockers will arrive via email from NoReply@neopostwts.com.

Packages held at the customer service window will come from NoReply@neopostwts.com.

In addition, a text message will be sent out.

- Navigate to the Mail and Package Center in 113 Shriver Center within 24 hours of receiving the notification.
- Locate the appropriate locker bank number and kiosk as provided in the notification.
- On the kiosk screen, select "Pick-up Parcel."
- Scan the barcode at the numbered kiosk assigned in the email notification.
- You may also use your pickup codes at the numbered kiosk assigned in the email notification.
- The designated locker containing your package will open automatically.
- Remove your package.
- Close the door completely to end the process.

Lost your pin code information?

Go to the customer service pickup window to receive a new code.

Can't pick up your package within 24 hours?

Forward your notification email to a roommate or friend to pick up your package for you.



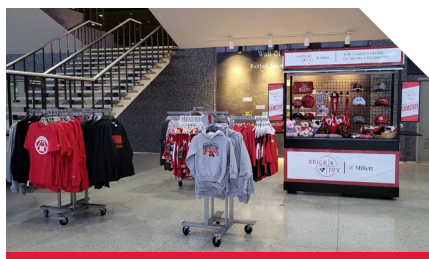
Brick & Ivy Campus Store and Miami's Online Bookstore

Brick & Ivy is Miami University's destination retail experience and serves as a convenient pickup location for textbooks ordered through Miami's Online Bookstore. Whether in store or online, Miami's campus store offers an impressive selection of branded apparel, merchandise, gifts, Myaamia Heritage Collection, and more. Be sure to visit us during orientation for exclusive special offers.

We're located in Shriver Center next to Starbucks and online at CampusStore.MiamiOH.edu.

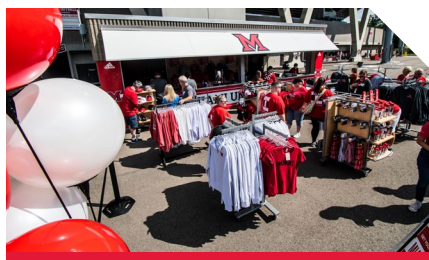
Top 5 Reasons to Shop at Brick & Ivy:

- Best selection of branded apparel and merchandise for all Miami fans
- Textbook pickup location for materials ordered through Miami's Online Bookstore
- Buy online with free in-store pickup
- Art and class supplies to be first day ready
- On-trend styles from your favorite brands including Vineyard Vines, Peter Millar, Cutter & Buck, Johnnie-O, Columbia, and more!



Millett Hall

Stop by Brick & Ivy at Millett Hall during home men's basketball games. We open 60 minutes before game start where you can shop a great selection of gameday gear to help cheer the RedHawks to victory!



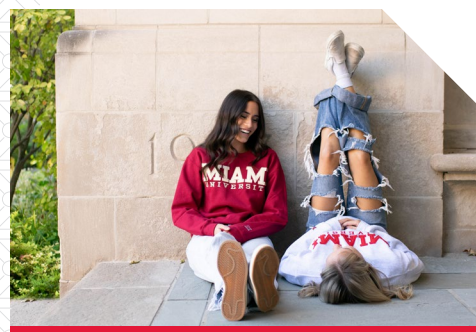
Yager Stadium

Brick & Ivy is your gameday store! Visit us at the west gate of Yager Stadium for all your gameday gear. We open 90 minutes before kickoff.

About Miami's Inclusive Access Program

Miami University's Inclusive Access (IA) program ensures that students have immediate access to required course materials on the first day of class and at the lowest price possible. IA course materials are automatically provided in digital formats directly inside of Canvas.

View the [Inclusive Access Student Guide](#) to learn more about Miami's Inclusive Access Program and how to access IA course materials. If you have additional questions, please visit the [Inclusive Access Help Desk](#) or email our Student Support at iasupport@ecampus.com.





RECREATION CENTER

RECREATION CENTER

750 S. Oak St. | 513-529-8181

[MiamiOH.edu/rec](https://miamiOH.edu/rec)

Miami Recreation is dedicated to meeting the diverse recreational needs of its patrons.

Our primary goal is to provide an environment that promotes and enhances wellness in the lives of Miami students, members, and guests. Participants enjoy informal recreation, swim lessons, riding camps, academic courses, open pool time, group fitness classes, adventure activities, gaming at the Esports Lounge, intramural and club sports, and special events year-round.

The primary Recreational Center (aka “The Rec”) is open 113 hours per week in addition to three satellite recreation facilities at Martin Dining Hall, Clawson Hall, and Chestnut Fieldhouse. Each has a unique program and informal recreation options. Access to these spaces for informal recreation is included in student fees with additional cost for programs. Visit [MiamiOH.edu/rec](https://miamiOH.edu/rec) for more information.

Program Options

- Personal Training
- Fitness Classes
- Outdoor Trips
- Intramural Sports
- American Red Cross
- Club Sports
- Swim Lessons
- Scuba
- Pickleball Courts
- Riding Lessons
- Fully Stocked Pro Shop
- Living Learning Communities
- Team Building
- Outdoor Equipment Rental



GOGGIN ICE CENTER

GOGGIN ICE CENTER

610 S. Oak St. | 513-529-9800

[MiamiOH.edu/ice](https://miamiOH.edu/ice)

Goggin Ice Center provides students, faculty, staff, and the surrounding community a space to engage in informal recreation and provides programming geared towards all ages and abilities. Goggin offers a variety of recreational opportunities such as public skating and instruction in ice skating, hockey, broomball, and curling. Participation options exist for intramural and club-level team play throughout the school year. Goggin also provides on-ice academic classes offered for educational credit.



Goggin serves the community in youth skating and hockey programming and is home to the Miami University Varsity RedHawk ice hockey and synchronized skating teams. Goggin offers a wide range of free events during the first couple weeks of the semester including Welcome Back Skates, Broomball, and more. Goggin also features additional meeting spaces with catering options available or private ice rentals for student group events, family events, and much more. Visit [MiamiOH.edu/ice](https://miamiOH.edu/ice) for more information.



REC AND GOGGIN PRO SHOPS



■ Miami Recreation Center Pro Shop

Here you will find post-workout food and beverages, athletic clothing, Miami Spirit Wear, and accessories.



■ Goggin Ice Center Pro Shop

Support your RedHawks on game day by shopping the athletic venues that offer official Adidas sideline gear, spirit wear, and accessories.

STUDENT EMPLOYMENT

With over 1,500 student employees, Campus Experiences is the largest employer of students on campus. We take pride in offering a student employment experience that both engages and empowers each student.

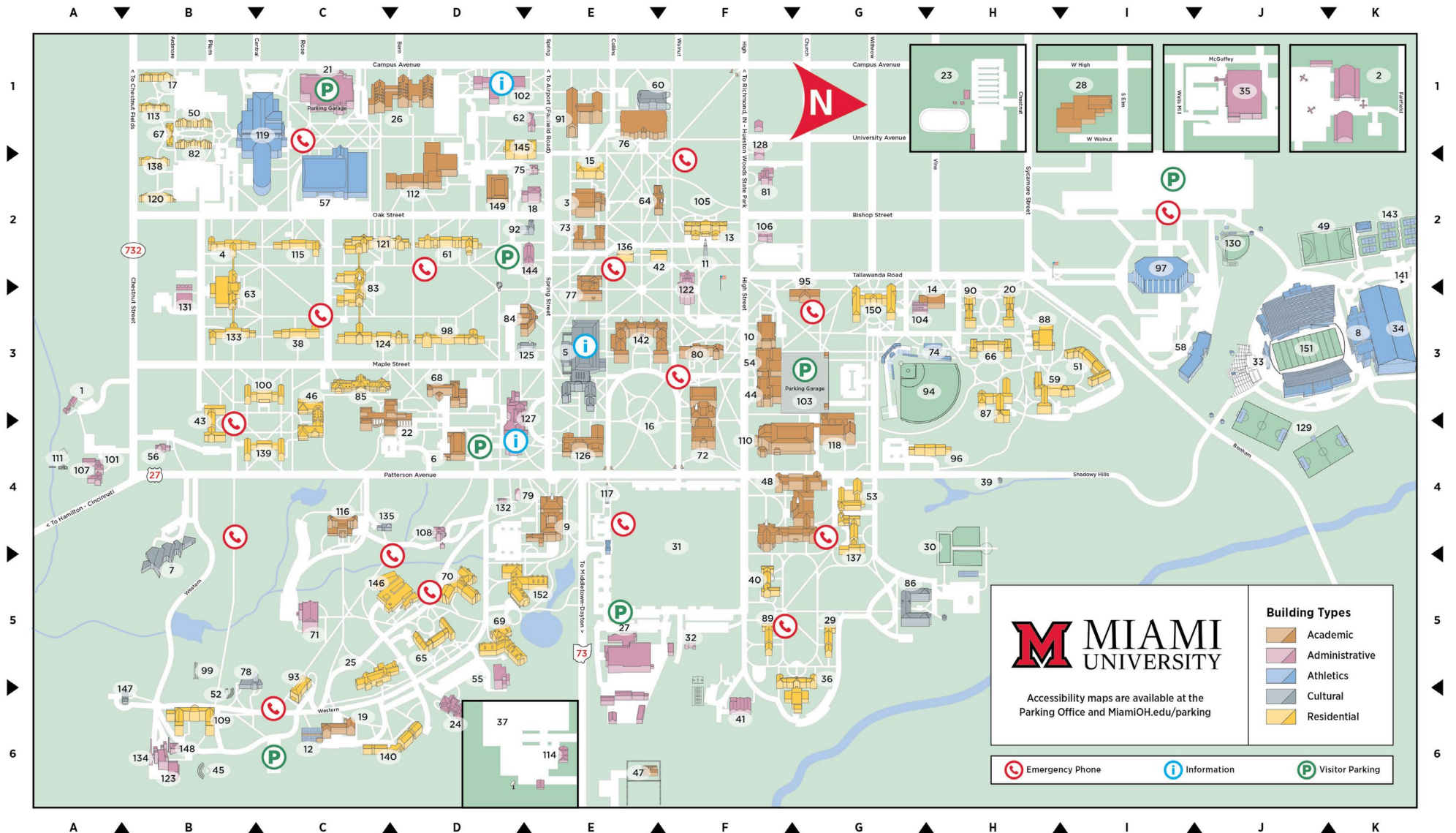
Working as a student allows you to focus on academics while earning income, building skills, and making connections with professors, staff, and other students. Locations are convenient and scheduling has greater flexibility to work around your classes and exams. The National Center for Education Statistics has found that “students working 1–15 hours weekly earn higher GPAs” than students who do not work at all.

Remember to bring original documents with you to the Human Resources office to complete the hiring process. A list of acceptable documents can be found at [USCIS.gov/i-9-central/form-i-9-acceptable-documents](https://uscis.gov/i-9-central/form-i-9-acceptable-documents).

If you are looking for a student job, sign in to MyMiami to authenticate as a Miami student. Search for “Workday” in MyMiami, then choose Login to Workday. Search “Find Job,” and use the filter on the left to refine your search to student jobs.

Please email the posting contact listed in the job posting for more information about a specific position or to follow up on your application. Call 513-529-3131 if you’re having trouble accessing the application.





1	Advancement Services (ASB)	A-3	20	Brandon Hall (BRN)	H-3	38	Dodds Hall (DOD)	C-3	58	Gross Student Athlete Development Ctr. (SDC)	I-3	76	King Library (KNG)	E-1	96	Miami Inn Hall (INN)	H-4	116	Presser Hall (PRS)	C-4	136	Stoddard Hall (STD)	E-2
2	Airport (WHA)	K-1	21	Campus Avenue Garage (CAG)	C-1	39	Dogwood Grove	H-4	59	Hahne Hall (HNE)	H-3	77	Kreger Hall (KRG)	E-3	97	Millett Assembly Hall (MIL)	I-2	117	Pulley Carillon, Vernon L.	E-4	137	Symmes Hall (SYM)	G-4
3	Alumni Hall (ALU)	E-2	22	Center for Performing Arts (CPA)	D-4	40	Dorsey Hall (DOR)	F-5	60	Hall Auditorium (HAL)	E-1	78	Kumler Chapel (KUM)	B-5	98	Minnich Hall (MIN)	D-3	118	Psychology Bldg. (PSY)	G-4	138	Tallawanda Hall (HCT)	B-2
4	Anderson Hall (AND)	B-2	23	Chestnut Fields (CFA)	H-1	41	East End (EST)	F-6	61	Hamilton Hall (HAM)	D-2	79	Langstroth Cottage (LNG)	D-4	99	Molyneux-Western Bell Tower	B-5	119	Recreational Sports Ctr. (RSC)	C-1	139	Tappan Hall (TAP)	C-4
5	Armstrong Student Ctr. (ASC)	E-3	24	Child Development Ctr. (CDC)	D-6	42	Elliott Hall (ELT)	E-2	62	Hanna House (HAN)	E-1	80	Laws Hall (LWS)	F-3	100	Morris Hall (MOR)	C-3	120	Reid Hall (HCR)	B-2	140	Thomson Hall (TOM)	D-6
6	Art Bldg. (ART)	D-4	25	Clawson Hall (CLW)	C-5	43	Emerson Hall (EMR)	B-3	63	Harris Hall (HAR)	B-2	81	Lewis Place (LEW)	F-2	101	Murstein Alumni Ctr. (MUR)	A-4	121	Richard Hall (RIC)	D-2	141	Track, George L. Rider	K-2
7	Art Mus., Richard & Carole Cocks (AMU)	B-5	26	Clinical Health Sciences & Wellness (CHS)	D-1	44	Engineering Bldg. (EGB)	F-3	64	Harrison Hall (HRN)	E-2	82	Logan Lodge (HCL)	B-1	102	Nellie Craig Walker Hall (CAB)	D-1	122	Roudebush Hall (RDB)	F-3	142	Upham Hall (UPH)	E-3
8	Athletic Performance Ctr., Randy Gunlock Family (YPC)	K-3	27	Cole Service Bldg. (CSB)	E-5	45	Ernst Nature Theatre	B-6	65	Havighurst Hall (HAV)	D-5	83	MacCracken Hall (MAC)	C-2	103	North Campus Garage (NCG)	G-3	123	Sawyer Hall (SAW)	B-6	143	Varsity Tennis Courts	K-2
9	Bachelor Hall (BAC)	E-4	28	College @ Elm, Lee and Rosemary	I-1	46	Etheridge Hall (ETH)	E-6	66	Havighurst Hall (HAV)	H-3	84	MacMillan Hall (MMH)	E-3	104	North Chiller Plant	G-3	124	Scott Hall (SCT)	D-3	144	Warfield Hall (WAR)	E-2
10	Benton Hall (BEN)	F-3	29	Fisher Innovation	G-5	47	Equestrian Ctr., John W. Brown (USU)	E-6	67	Heritage Commons (HCC)	B-1	85	Maplestreet Station (MSS)	C-3	105	Ogden Hall (OGN)	F-2	125	Sesquicentennial Chapel (CHP)	E-3	145	Wells Hall (WEL)	D-1
11	Beta Bell Tower (BET)	F-2	30	Conrad Formal Gardens	H-4	48	Farmer School of Business (FSB)	F-4	68	Hiestand Hall (HIS)	D-3	86	Marcum Conference Ctr. (MCC)	G-5	106	Old Manse (OMN)	F-2	126	Shideler Hall (SHD)	E-4	146	Western Dining Commons (WDH)	C-5
12	Belk Greenhouse (BOV)	C-6	31	Cook Field	H-4	49	Field Hockey Complex	K-2	69	Hillcrest Hall (WSC)	D-5	87	Marcum Hall (PRE)	H-3	107	Panuska Development Ctr. (MUR)	A-4	127	Shriver Ctr. (SHC)	D-3	147	Western Lodge (LNS)	B-6
13	Bell Tower Place (OGN)	F-2	32	Cook Place (COK)	F-5	50	Fisher Hall (HCF)	B-1	70	Hodge Hall (WSA)	I-3	88	Martin Dining Commons (MAR)	H-3	108	Patterson Place (PAT)	D-4	128	Simpson-Shade House (SHH)	F-1	148	Western Maint. Bldg. (WMB)	G-6
14	Billings Hall (BIL)	H-3	33	Cradle of Coaches Plaza	J-3	51	Flower Hall (FLW)	B-6	71	Hoyt Hall (HYT)	C-5	89	McBride Hall (MCB)	F-5	109	Peabody Hall (PBD)	F-4	129	Soccer Complex	J-4	149	Williams Hall (WHI)	D-2
15	Bishop Hall (BIS)	E-2	34	Dauch Indoor Sports Ctr. (ISC)	K-3	52	Freedom Summer '64 Memorial	G-4	72	Hughes Laboratories (HUG)	F-4	90	McFarland Hall (MCF)	H-3	110	Pearson Hall (PSN)	F-4	130	Softball Field	J-2	150	Withrow Hall (WTH)	B-3
16	Bishop Woods	E-4	35	Demise Culinary Support Ctr. (CSC)	J-1	53	Garden Commons (GCM)	G-4	73	Irvin Hall (IRV)	E-2	91	McGuffey Hall (MCG)	E-1	111	Peffer Memorial Park	A-4	131	South Chiller Plant	B-3	151	Yager Stadium (YES, YWS)	J-3
17	Blanchard House (HCB)	B-1	36	Dennison Hall (DEN)	G-6	54	Garland Hall (GAR)	F-3	74	Jay Hayden Baseball Support Ctr. (MKS)	H-3	92	McGuffey Museum (MMU)	E-2	112	Phillips Hall (PHI)	D-2	132	Stancote House	D-4	152	Young Hall (WSB)	E-5
18	Bonham House (BON)	E-2	37	Ditmer Parking Lot	D-6	55	Geothermal Energy Plant (GEP)	D-5	75	Joyner House (JOY)	E-2	93	McKee Hall (MCK)	C-5	113	Pines Lodge (HCP)	B-1	133	Stanton Hall (STN)	B-3			
19	Boyd Hall (BOY)	C-6				56	Glos Ctr. (GGB)	B-4				94	McKie Field at Hayden Park (MKE)	H-3	114	Police Services Ctr. (PSC)	E-6	134	Steam Plant (MSP)	B-6			
						57	Goggin Ice Ctr. (IAR)	C-2				95	McVey Data Science (DSB)	G-3	115	Porter Hall (POR)	C-2	135	Stillman-Kelley Studio	C-4			

HAVE QUESTIONS?

MiamiOH.edu/campus-experiences

