

HOUSING, DINING, AND RECREATION

# Orientation

2024-2025



---

# TABLE OF CONTENTS

Miami Dining ..... 1

Campus Services Center ..... 7

Mail and Package Center ..... 13

Brick & Ivy Campus Store ..... 15

Recreation Center ..... 17

Goggin Ice Center ..... 18

Student Employment ..... 20





DINING SERVICES

## MIAMI DINING

Bell Tower 401 E. High St.

[MiamiOH.edu/dining](http://MiamiOH.edu/dining)

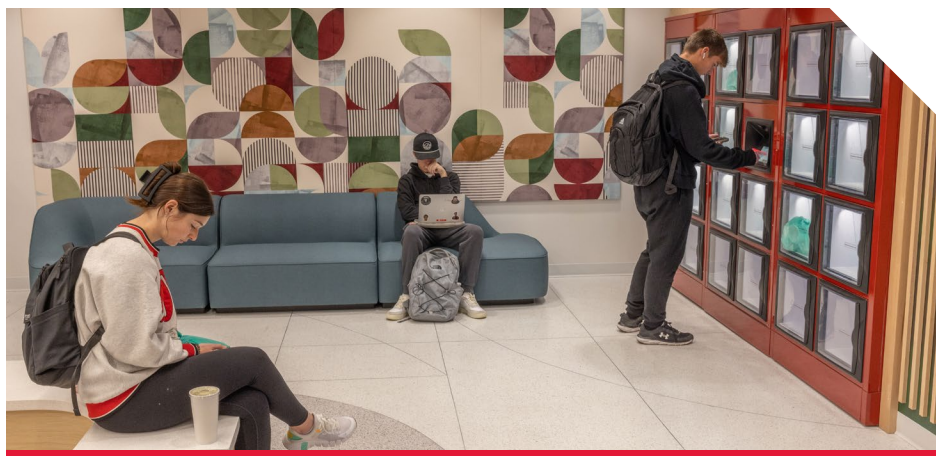
### On-campus Dining Venues

Miami University Dining Services takes pride in serving the needs of over 20,000 students, staff, and faculty every day across more than 20 locations. Our commitment to quality and service is reflected in our well over 12,000 meal plan holders. We strive to provide our customers with a diverse range of options that cater to different tastes and dietary needs.

Whether it's a quick snack, a full meal, or a hot cup of coffee, we have you covered. With a team of dedicated professionals, we are passionate about ensuring that every dining experience is enjoyable and meets our customers' needs. Our focus on quality, service, and innovation has made us a leader in the industry, and we are proud to be a part of the Miami University community.

### Dining Events

Miami Dining is more than just meal swipes and Dining Dollars — it's also a hub for fun events and delicious culinary experiences. From farmers markets to chef-led Teaching Kitchens, culinary pop ups, cultural celebrations, food inspired DIY events, and our campus-wide Joyful celebrations, there's always something exciting happening within our dining spaces. With a focus on creating a vibrant dining community, Miami Dining is more than just a place to grab your next meal — it's a place to connect with friends, try new foods, and make lasting memories. Join us for our next event and experience the best of Miami Dining!



## ARMSTRONG STUDENT CENTER

550 E. Spring St.

Grubhub mobile and kiosk ordering available through Armstrong Student Center dining operations.

### Choolaah Indian BBQ

This location offers a unique dining experience by blending traditional Indian flavors with a contemporary BBQ twist. This menu features items such as tikka masala, samosa, paneer, mango lassi, and more.

### Ciao Bella

Say “ciao” as you embark on a beautiful tour of flavors while exploring a globally-inspired approach to a classic dish, pasta. Ciao Bella features a classic menu of Italian dishes crafted with traditional ingredients but also introduces a layer of excitement with pizza and customizable pasta bowls featuring international flavors and craveable sides.

### Delicious Without at Haines

Savor the flavor at Delicious Without at Haines. Our à la carte restaurant is all about making sure everyone can enjoy a worry-free meal by crafting delicious dishes without the top 9 allergens. At Delicious Without at Haines, you will find a diverse array of nutritious and flavorful options, perfect for those who crave allergen-friendly dining.

### Emporium

Visit our campus market for a quick snack, a hot cup of coffee, or to stock up your pantry with all your favorite goodies. We also offer a variety of delicious meals ready to go, available for purchase with Dining Dollars or a meal swipe!

### Kabar Sushi and Asian Bistro

Discover the taste of Asia at Kabar, featuring delicious Asian cuisine like made to order sushi and refreshing boba tea.

### Panera Bread

Grab a quick and satisfying bite at Panera Bread. Choose from an array of artisan sandwiches, soups, salads, desserts, or pastries. This popular spot also provides crafted beverages such as lemonades, coffees, and teas.

### Pulley Diner

Step back in time to this 1950s-style diner with a menu featuring all day breakfast, burgers, grilled chicken sandwiches, fries, and a variety of milkshakes and ice creams.

### Red Zone

This dining location is dedicated to the history of Miami University Athletics. That’s why you will find your favorite game day food items such as wings, burgers, BBQ, fries, and tots here. Take your meal to the next level by “topping off” your menu item with fun and trendy toppings.



## BELL TOWER

401 E. High St.

Bell Tower is a premier “ghost kitchen” mobile order and food locker pickup concept that brings three different food concepts together under one roof. With Starbucks located conveniently next door, you can order ahead and pick up your favorite food and beverages in one stop. If you do not have time to pick up your food, you can order it ahead and have it delivered directly to you via Starship robots.

## DIVIDENDS

800 E. High St. - *Inside Farmer School of Business*

### Asian Market

Choose from poke bowls, edamame, dumplings, and boba tea.

### Fiscal Grind

Caffeinate your day with our Miami Grind specialty coffee or choose from a selection of teas. Pair your drink with a warm baked good for the perfect on-the-go snack.

### Panini Portfolio

Enjoy a selection of freshly-pressed sandwiches.

### Preferred Stock

This menu includes classic rotating soups such as chicken noodle, roasted tomato basil, and a daily special!

### Traders' Greens

Enjoy a personalized entrée salad with an extensive selection of delectable toppings.



## GARDEN DINING COMMONS

95 N. Patterson Ave.

### Garden Dining Commons

Located next door to the Farmer School of Business, Garden Dining Commons is the perfect all-you-care-to-eat dining spot for a delicious meal. Find your classic favorites and discover new ones with our rotating menu, all while using meal swipes or Dining Dollars. Enjoy your meals in the beautiful dining areas with vaulted ceilings or enjoy the weather on the outdoor seating area.

## KING CAFE

151 S. Campus Ave. - *Inside King Library*

Take a break from your studies at King Cafe. Recharge with a quick meal or coffee. Whether you're in a rush or need a moment to relax, this is the perfect spot to satisfy your cravings and fuel up for your next study session.



## MAPLESTREET DINING COMMONS

571 Maple St.

Maplestreet Dining Commons is an all-you-care-to-eat dining hall and one of the busiest hubs on campus. It offers an expansive range of cuisines and themes, including rotating global cuisines, vegetarian options, shaken salads, a New York-style deli, and classic favorites such as pizza, pasta, burgers, and delicious baked treats.

You can also indulge in Maplestreet's famous ice cream. The dining hall provides a restaurant-style feel with distinct "venues within the venue" for each type of cuisine. In addition, there's an allergen station that is free of the top 9 allergens, as well as a vegan/vegetarian station, ensuring that everyone can enjoy their meal.

## MARKET STREET AT MACCRACKEN

500 Center Dr.

As the largest market on campus, Market Street at MacCracken features a wide variety of packaged food and everyday necessities, including an extensive selection of locally produced offerings.

Additionally, in this space, you can find classic breakfast dishes from BRKFST & Co, made-to-order burgers and loaded fries from True Burger, and freshly brewed Miami Grind coffee and sweet treats from the cafe.

## MARTIN DINING COMMONS

5397 Bonham Rd.

### Scoreboard Market

A convenience market and short-order grill offering a large variety of packaged foods and beverages as well as made-to-order sandwiches, sides, and appetizers that you can order through the Grubhub app.

### Martin Dining Commons

Located in the campus athletic complex, Martin Dining Commons serves as the all-you-care-to-eat dining hall where students can find the foods to fuel their lifestyles.

Athlete or not, Martin's menus are designed in conjunction with our registered dietitians to provide menu offerings customized to meet specific needs — from a carb-loading customizable pasta station to carving stations to provide much-needed protein to fuel performance.



---

## STARBUCKS

701 E. Spring St. - *Inside the Shriver Center*

201 Tallawanda Rd. - *Inside Withrow Hall*

401 E. High St. - *Inside Bell Tower*

Enjoy a cup of quality coffee from Starbucks today. Iced beverages, blended coffees, bakery items, bottled drinks, sandwiches, and snacks available daily.

## WESTERN DINING COMMONS

480 Western Dr.

### ■ Greystone Market

Located adjacent to Western Dining Commons, Greystone Market offers a wide variety of snacks, drinks, daily household items, and packaged meals to go.

### ■ Western Dining Commons

Western Dining Commons offers more than just delicious food. As a LEED Certified Silver Building, it's also a model of sustainability. Choose from a diverse range of globally-inspired cuisines including Mediterranean, Latin, Asian, Italian, and American favorites at this all-you-care-to-eat dining hall. You can also find another Delicious Without allergen station providing salads, comfort food, and build-your-own bowls made without the top 9 allergens.

The spacious dining area features an abundance of natural light and modern decor, making it the perfect place to gather with friends or take a break from a busy day. And don't forget to check out the outdoor seating area!

## DINING ACCOMMODATION NEEDS

Miami Dining is committed to going above and beyond expectations to ensure students can dine safely on campus regardless of dietary needs. We assist students with a wide variety of dietary restrictions including food allergies, intolerances, and medical needs through a partnership with the Miller Center for Student Disability Services. We also take into consideration cultural backgrounds, religious affiliations, and lifestyle choices.

Discover comprehensive dietary resources for students on our Miami Dining website. Explore the "Menus and Hours" tab to access a wide range of menus, featuring convenient filters to cater to your specific dietary preferences. Additionally, you'll find valuable nutrition information to enhance your dining experience.

### ■ Nut-Friendly Dining Commons

Our dining commons are NUT-FRIENDLY. This means we do not actively include peanuts and tree nuts (including coconut) in our recipes. We avoid purchasing ingredients that house a "may contain [nuts]" statement in our recipes. We do however, purchase ingredients that may contain a "processed in the same facility with [nuts]" or "processed on shared equipment with [nuts]" statement. For those who enjoy nut products, don't worry! We have packaged nut products in the retail markets. Other retail locations on campus may have nuts in their menus, for example, Panera and Starbucks, but the majority follow the nut-friendly initiatives.

## Grubhub Mobile Ordering

With Grubhub, you can beat the lines and order ahead at select locations across campus, including popular spots like Pulley Diner. Plus, with the app's handy features, you can easily track your order status, view menus, and customize your meals to fit your preferences.

If you're looking to take your dining experience to the next level, consider using Grubhub to order delivery from Bell Tower through our Starship robots. These friendly, high-tech bots are stationed at Bell Tower and can deliver your food straight to your location on campus. Simply place your order through the Grubhub app and let the robots do the rest! It's a fast, convenient way to get your favorite meals delivered to you on the go.



Save time,  
order for pickup.

**\$3** off  
your first  
on-campus  
pickup order  
of \$7+ with

CODE **NOMS**

## Meal Plans

Depending upon the level you select, you will get a specific number of meal swipes added to your account each week. If you have any unused meal swipes at that time, they do not carry forward. Our Diplomat Minimum, Plus, and Standard levels also come with a "Bonus Week" of meal swipes. This means that those plans come with an extra week's worth of meal swipes, which DO roll forward each week. Meal plans are designed to provide meal opportunities for students each semester. If you are finding that you are not able to get the most use out of your plan, you can change it up to the first day of the semester for both fall and spring. Simply login to your housing portal to adjust accordingly. Find more meal plan information including pricing on the following page.

## Meal Swipe Flexibility and Dining Dollars

For quicker on-the-go options, our retail market locations and Bell Tower offer Meals To Go that include an entrée, piece of fruit, and a water bottle that can be purchased with one meal swipe. For continuing students, any unspent Dining Dollars will automatically transfer to your meal plan for the next term. We encourage you to monitor your balance regularly and budget carefully if you're considering future deposit amounts before the end of the semester.

## Vending on Campus

There are over 204 machines across campus, conveniently located in residence halls and academic buildings. Offering a wide variety of beverages, snacks, healthy options, and more, available 24 hours a day.





CAMPUS SERVICES CENTER

## CAMPUS SERVICES CENTER

Nellie Craig Walker Hall  
301 S. Campus Ave., 034

[MiamiOH.edu/campus-services](https://miamiOH.edu/campus-services)

### 2024–2025 Meal Plans

Whether you're looking for flexibility, transparency, or simplicity, we've got the perfect plan for you. Our Diplomat Meal Plans combine meal swipes with Dining Dollars, so you can enjoy a wide range of dining options across campus. And with our easy-to-use system, you'll be able to focus on what really matters: enjoying your meals! Learn more about your meal plan options below, and also be sure to explore dining options in the "Places to Eat" section of our Miami Dining website at [MiamiOH.edu/dining](https://miamiOH.edu/dining).

Meal plans are available to all Miami University students, and are required for all students living in residence halls. Students can change their meal plan selection up to the first day of each semester. You can login to your housing portal to update your meal plan selection at [MiamiOH.edu/housingcontract](https://miamiOH.edu/housingcontract).

### Meal Plan Pricing for 2024–2025

Level	What's Included Each Semester	Cost per Semester
Diplomat Premium	Provides unlimited buffet meals for you, \$800 declining balance dollars, and 5 guest meals. Rest assured that you can eat at buffets as often as you'd like, and also use your flexible spending dollars at any dining location on campus.	\$3,880
Diplomat Plus	Provides 7 buffet meals per week, \$1,100 declining balance dollars, and 5 guest buffet meals. This plan also provides a bonus week's worth of buffet meals that can be used at any time during the semester!	\$3,318
Diplomat Standard	Provides 16 buffet meals per week, \$500 declining balance dollars, and 5 guest buffet meals. This plan also provides a bonus week's worth of buffet meals that can be used at any time during the semester!	\$3,184
Diplomat Minimum	Provides 14 buffet meals per week, \$100 declining balance dollars, and 5 guest buffet meals. This plan also provides a bonus week's worth of buffet meals that can be used at any time during the semester!	\$2,520

See our website for all other costs at [MiamiOH.edu/mealplans](https://miamiOH.edu/mealplans).

## ■ MUIaa

MUIaa is an on-campus debit account that is used for the residence hall laundry machines, RedHawk retail locations, MU Box Office, MUPrint printers and copiers, and vending.

To add money to your account, sign up on your “Housing and Meal Plan Contract.”

To deposit additional money into an account, simply access the One Stop website at [MiamiOH.edu/onestop](https://MiamiOH.edu/onestop).

### MUIaa is refundable.

To view transactions and balances visit [WebCardCenter.MiamiOH.edu](https://WebCardCenter.MiamiOH.edu).

## ■ Residence Hall Staff

The Residence Life staff includes full-time professionals, graduate students, and undergraduate students.

A Resident Assistant (RA) lives in each residence hall corridor to help students make the transition from high school to college and to plan special events so students get to know one another. These carefully selected and trained upperclass students are also familiar with the scheduling process and often share their own knowledge and experience.

A Resident Director will live in your community as well. They will help shape the environment and experiences of residential students.

## ■ Room Assignments

During the summer, our office works diligently to finalize housing assignments. We strive to meet as many preferences and requests as possible. In order to meet the most preferences, our process takes the majority of the summer.

Room assignment information for incoming first-year students is sent out by email in late July/early August.

## ■ Living Requirements

At Miami, we highly value the residential experience for student success. All first-year and second-year students are required to live on campus unless they meet one of the following criteria:

- At least 21 years of age before the first day of class.
- Have matriculated full-time for at least two years at another institution of higher education or a regional campus (*credits must be post high school*).
- Commute from the home of a parent or legal guardian.



## ■ Miami Digital ID

Miami University has implemented the Miami Digital ID as an official form of identification. Utilizing the Miami Digital ID ensures you are never without your key to campus.

The Miami Digital ID is available at no cost to all students and is the default form of ID for incoming students. The ID provides access to residence halls, campus buildings, meal plans, Recreational Sports Center, MUlaa debit accounts, library resources, and more.

Using Digital ID is easy, and directions for loading Digital ID directly from the GET app can be found at [MiamiOH.edu/digitalid](https://MiamiOH.edu/digitalid). An approved photo must be uploaded to the GET app before Digital ID can be loaded onto your smartphone or smartwatch. Photo approval could take 24-48 hours. **Be sure the Digital ID is loaded on your device before you arrive for move-in.**

## ■ Airport Shuttles

Airport shuttles with multiple departures and returns to and from the Cincinnati (CVG) airport are offered for Thanksgiving, winter break, and spring break using professional charter coaches at a cost of only \$40 each way (inclusive of rider and luggage). Visit [MiamiOH.edu/shuttle](https://MiamiOH.edu/shuttle) for more information.



**Airport Shuttles**

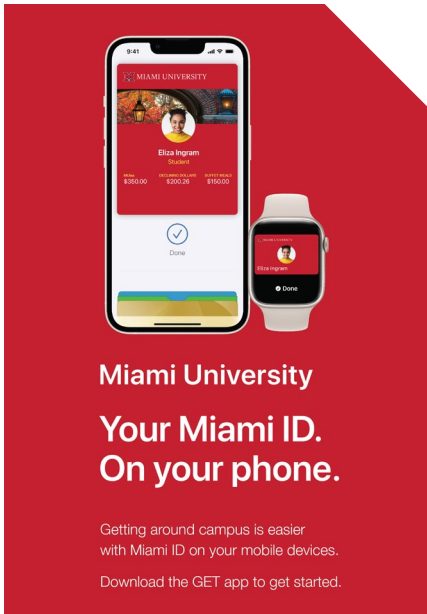
Roundtrip airport shuttle services to CVG airport available for Thanksgiving, winter, and spring breaks!

Buy your tickets today or get more information at [MiamiOH.edu/shuttle](https://MiamiOH.edu/shuttle)

The graphic features a stylized illustration of a white airplane flying over a sunset landscape with orange and yellow tones. A white hibiscus flower is in the bottom right corner.

## ■ Learn More

If you have any questions do not hesitate to contact the Campus Services Center at [CampusServicesCenter@MiamiOH.edu](mailto:CampusServicesCenter@MiamiOH.edu) or in person in room 034 of Nellie Craig Walker Hall.



**Miami University**

**Your Miami ID.**  
**On your phone.**

Getting around campus is easier with Miami ID on your mobile devices.

Download the GET app to get started.

The image shows a smartphone and a smartwatch displaying the Miami University Digital ID interface. The smartphone screen shows the user's name 'Eliza Ingram', student status, and three account balances: MUlaa (\$350.00), MU Dining (\$200.26), and MU Recreation (\$100.00). A 'Done' button is visible at the bottom of the screen. The smartwatch also displays the user's name and a 'Done' button.

---

## HOUSING FAQs

### ■ **When will I find out where I'm living?**

Housing assignment information will be emailed to your Miami account in late July/early August.

### ■ **What linens will I need?**

You'll need to provide your own pillows, blankets, and sheets (which fit an 80" x 36" XL twin mattress). You and your roommate(s) may want to coordinate bedspreads and additional items to decorate your room.

### ■ **What furniture is provided?**

All rooms are furnished with beds, dressers, desks, desk chairs, bed rails, trash can, recycling can, and closets or wardrobes. Due to campus storage space limitations, requests to remove university provided furniture cannot be accommodated. Students are discouraged from bringing their own furniture to campus. Typically, rooms can only safely accommodate the furnishings provided.

### ■ **What appliances can I use in my room?**

Approved appliances for use in student rooms include stereos, televisions, computers, fans, clocks, lamps, irons, blow-dryers, curling irons, single-serve contained coffee makers, and powerstrip cords with built-in circuit breaker. All items must be Underwriters Laboratory approved.

### ■ **What items can I not use?**

The following items are prohibited in your room: private loft beds, bed risers, electric blankets and sheets, hot plates, sun lamps, candles, electric skillets and grills, toaster ovens/toasters/popcorn poppers, open hot pad coffee makers, halogen lamps, wireless router, wireless printer, and non-circuit breaker equipped extension cords.

### ■ **How large are the residence hall rooms?**

The size of our rooms varies from one residence hall to another, as a result of architectural differences. You will receive the dimensions of your room when you get your assignment in late July/early August. The majority of rooms are multiple occupancy rooms for two people.

### ■ **Will I have internet in my room?**

Yes, each room has both wired and wireless connectivity providing access to the internet and local network resources.

### ■ **Do I need to purchase property insurance?**

Miami does not assume responsibility for the loss of money or valuables, damage to property, or injuries on the premises. If you are not covered under your parent/guardian homeowner's insurance policy, we strongly recommend that you make arrangements for insurance protection against such losses, such as renters insurance.

### ■ **What can I use to hang items on my walls?**

You may decorate your walls using molding hooks ("S" hooks), twine, and reusable poster putty. Due to the room damage they create, Command Strips, Scotch tape, duct tape, adhesives, tacks, nails, screws, or pins may not be used for any purpose (students are responsible for room damage including the room door).

*\*LED lights are not recommended for use in the residence hall rooms as the double-sided tape used to attach them to the walls will cause damage resulting in damage fees. Residents are responsible for any repairs/damages regardless of supplies used if damage results.*

Room decorations must not be affixed to or suspended from the ceiling, light fixtures, smoke detector, occupancy sensors, or sprinkler heads. You may be held financially responsible for the repair and clean-up resulting from an unintentional/intentional activation of a sprinkler head.

### Can I park on campus?

A parking permit is required to park on Miami University's campus at all times unless in a garage or at a meter. Please contact the Campus Services Center at 513-529-5000 or visit our website at [MiamiOH.edu/parking](http://MiamiOH.edu/parking) for questions concerning eligibility for or purchasing parking permits.

### Can I have a pet?

Pets are not permitted in the residence halls, except for small fish. Tank size cannot exceed five gallons, and tank heaters are not allowed.

### What if my roommate and I do not get along?

Roommate conflicts are mediated by your Residence Hall Director and Residence Life staff members, who encourage open communication between roommates to come to a mutual resolution.

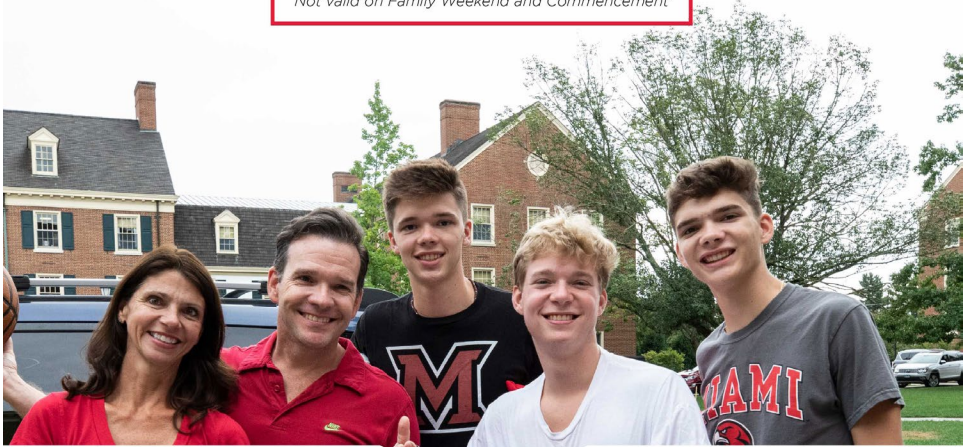
## JOIN THE CLUB!

Save 10% off every night you stay.

*All current Miami University parents are eligible.*

BASED ON AVAILABILITY

*Not valid on Family Weekend and Commencement*



REGISTER ON OUR WEBSITE  
[MiamiOH.edu/Marcum](http://MiamiOH.edu/Marcum)

THE MARCUM  
Parents Club

951 E. Withrow St. Oxford, OH 45056  
(513) 529-6911

# Welcome

to Miami University's  
Official Online Bookstore



Ordering  
Textbooks  
from Your  
**OFFICIAL  
BOOKSTORE**

is Best

- ✓ The right professor-selected course materials guaranteed
- ✓ Free 1-day shipping to Brick & Ivy Campus Store
- ✓ Risk-free early ordering: returns up to 30 days after classes begin

[campusstore.miamioh.edu](https://campusstore.miamioh.edu)

Textbook ordering available now



Questions? 859-209-6958 or [bookstore@ecampus.com](mailto:bookstore@ecampus.com)

**Books** by **eCampus**

**ORDER TEXTBOOKS NOW**



MAIL AND PACKAGE CENTER

## MAIL AND PACKAGE CENTER

Shriver Center, 701 E. Spring St., 113  
513-529-9221  
[MiamiOH.edu/mail](mailto:MiamiOH.edu/mail)

### HOURS OF OPERATION

#### Smart Locker Access

Monday-Sunday  
24 hour access

#### Customer Pickup Window

Monday-Friday 8 a.m. - 5 p.m.	Saturday 11 a.m. - 2 p.m.
----------------------------------	------------------------------

#### U.S. Post Office

Monday-Friday  
8 a.m. - 4 p.m.  
*(money orders available)*

#### Smart Lockers

The Mail and Package Center receives packages for students living on campus in university residence halls during the academic year.

Due to the high volume of packages received on a daily basis:

- Packages will be held for 24 hours in lockers.
- An email will be sent with locker codes and locker location for pickup.
- If not picked up from locker in the first 24 hours, the package is then moved to the Customer Service Pickup Window for an additional 48 hours.
- After 72 hours, the package is returned to sender unless special arrangements have been approved for additional holding.

#### Receiving

As a student, you may receive mail from two different locations on campus:

##### Your mailbox at your residence hall

- All letter-size mail, newspapers, and magazines will be delivered to your residence hall mailroom.
- Sorted into your mailbox by RAs by 8 p.m. on Monday and Thursday.

##### Mail and Package Center

- For all packages, letters that require a signature, or anything too large to fit in your residence hall mailbox.

#### Mail Forwarding

- During winter term and summer break, letter mail will be forwarded to your home address.
- Contact the Mail and Package Center and request to continue your mail if you stay on campus during winter term and want to continue to receive mail on campus.
- Mail will be available for pickup at the Mail and Package Center.
- Students graduating, leaving the university, or who will be living off-campus the next term must notify all correspondents of their new address.
- Mail will no longer be forwarded for these students after the first day of the academic year in August.

## Resident Mailing Address

Your Name (include middle initial)  
Hall Name and Room Number

Hall Street Address  
Oxford, OH 45056

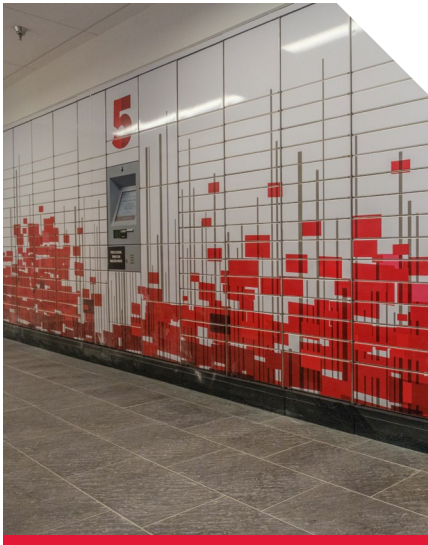
## Package Forwarding

Residents must stop by the Mail and Package Center before leaving campus and pickup any remaining packages being held.

Any items that have not been picked up by the first day of summer will be returned to sender (RTS).

During summer, packages received from the U.S. Postal Service will be forwarded to student's registered home address, along with all other U.S. mail.

All other shipping companies such as FedEx, UPS, and DHL charge additional fees for forwarding packages. Packages delivered by these carriers will be refused. Contact Amazon, FedEx, LaserShip, UPS, or DHL directly to make arrangements for forwarding.



## How to Use the Smart Locker System

Notification of packages placed in the Smart Lockers will arrive via email from [NoReply@neopostwts.com](mailto:NoReply@neopostwts.com).

Packages held at the customer service window will come from [NoReply@neopostwts.com](mailto:NoReply@neopostwts.com).

In addition, a text message will be sent out.

- Navigate to the Mail and Package Center in 113 Shriver Center within 24 hours of receiving the notification.
- Locate the appropriate locker bank number and kiosk as provided in the notification.
- On the kiosk screen, select "Pick-up Parcel."
- Scan the barcode at the numbered kiosk assigned in the email notification.
- You may also use your pickup codes at the numbered kiosk assigned in the email notification.
- The designated locker containing your package will open automatically.
- Remove your package.
- Close the door completely to end the process.

## Lost your pin code information?

Go to the customer service pickup window to receive a new code.

## Can't pick up your package within 24 hours?

Forward your notification email to a roommate or friend to pick up your package for you.





## BRICK & IVY CAMPUS STORE

Shriver Center  
701 E. Spring St., Floors 1 & 2  
513-529-2600  
[CampusStore.MiamiOH.edu](http://CampusStore.MiamiOH.edu)

### Brick & Ivy Campus Store and Online Bookstore

Brick & Ivy is Miami University's destination retail experience and serves as a convenient pickup location for textbooks ordered through Miami's Online Bookstore. Whether in store or online, Miami's campus store offers an impressive selection of branded apparel, merchandise, gifts, Myaamia Heritage Collection, and more. Be sure to visit us during orientation for exclusive special offers.

We're located in Shriver Center next to Starbucks and online at [CampusStore.MiamiOH.edu](http://CampusStore.MiamiOH.edu).

### Top 5 Reasons to Shop at Brick & Ivy:

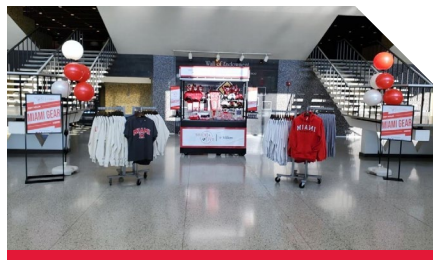
- Best selection of branded apparel and merchandise for all Miami fans
- Textbook pickup location for materials ordered through Miami's Online Bookstore
- Buy online with free in-store pickup
- Art and class supplies to be first day ready
- On-trend styles from your favorite brands including Vineyard Vines, Peter Millar, Cutter & Buck, Johnnie-O, Columbia, and more!

Want exclusive offers and the inside scoop on new arrivals and store events?

**SIGN UP HERE**

### Regular Store Hours

Monday-Friday  
8:30 a.m. - 5 p.m.  
Saturday  
10 a.m. - 4 p.m.



### Millett Hall

Stop by Brick & Ivy at Millett Hall during home men's basketball games. We open 60 minutes before game start where you can shop a great selection of gameday gear to help cheer the RedHawks to victory!



### Yager Stadium

Brick & Ivy is your gameday store!  
Visit us at the west gate of Yager Stadium for all your gameday gear. We open 90 minutes before kickoff.

**SHOP NOW!**





RECREATION CENTER

## RECREATION CENTER

750 S. Oak St. | 513-529-8181

[MiamiOH.edu/rec](https://miamiOH.edu/rec)

Miami Recreation is dedicated to meeting the diverse recreational needs of its patrons.

Our primary goal is to provide an environment that promotes and enhances wellness in the lives of Miami students, members, and guests. Participants enjoy informal recreation, swim lessons, riding camps, academic courses, open pool time, group fitness classes, adventure activities, gaming at the Esports Lounge, intramural and club sports, and special events year-round.

The primary Recreational Center (aka “The Rec”) is open 113 hours per week in addition to three satellite recreation facilities at Martin Dining Hall, Clawson Hall, and Chestnut Fieldhouse. Each has a unique program and informal recreation options. Access to these spaces for informal recreation is included in student fees with additional cost for programs. Visit [MiamiOH.edu/rec](https://miamiOH.edu/rec) for more information.

### Program Options

- Personal Training
- Fitness Classes
- Outdoor Trips
- Intramural Sports
- American Red Cross
- Club Sports
- Swim Lessons
- Scuba
- Pickleball Courts
- Riding Lessons
- Fully Stocked Pro Shop
- Living Learning Communities
- Team Building
- Outdoor Equipment Rental





GOGGIN ICE CENTER

## GOGGIN ICE CENTER

610 S. Oak St. | 513-529-9800

[MiamiOH.edu/ice](http://MiamiOH.edu/ice)

Goggin Ice Center provides students, faculty, staff, and the surrounding community a space to engage in informal recreation and provides programming geared towards all ages and abilities. Goggin offers a variety of recreational opportunities such as public skating and instruction in ice skating, hockey, broomball, and curling. Participation options exist for intramural and club-level team play throughout the school year. Goggin also provides on-ice academic classes offered for educational credit.

Goggin serves the community in youth skating and hockey programming and is home to the Miami University Varsity RedHawk ice hockey and synchronized skating teams. Goggin offers a wide range of free events during the first couple weeks of the semester including Welcome Back Skates, Broomball, and more. Goggin also features additional meeting spaces with catering options available or private ice rentals for student group events, family events, and much more. Visit [MiamiOH.edu/ice](http://MiamiOH.edu/ice) for more information.



## REC AND GOGGIN PRO SHOPS



### ■ Miami Recreation Center Pro Shop

Here you will find post-workout food and beverages, athletic clothing, Miami Spirit Wear, and accessories.



### ■ Goggin Ice Center Pro Shop

Support your RedHawks on game day by shopping the athletic venues that offer official Adidas sideline gear, spirit wear, and accessories.

## STUDENT EMPLOYMENT

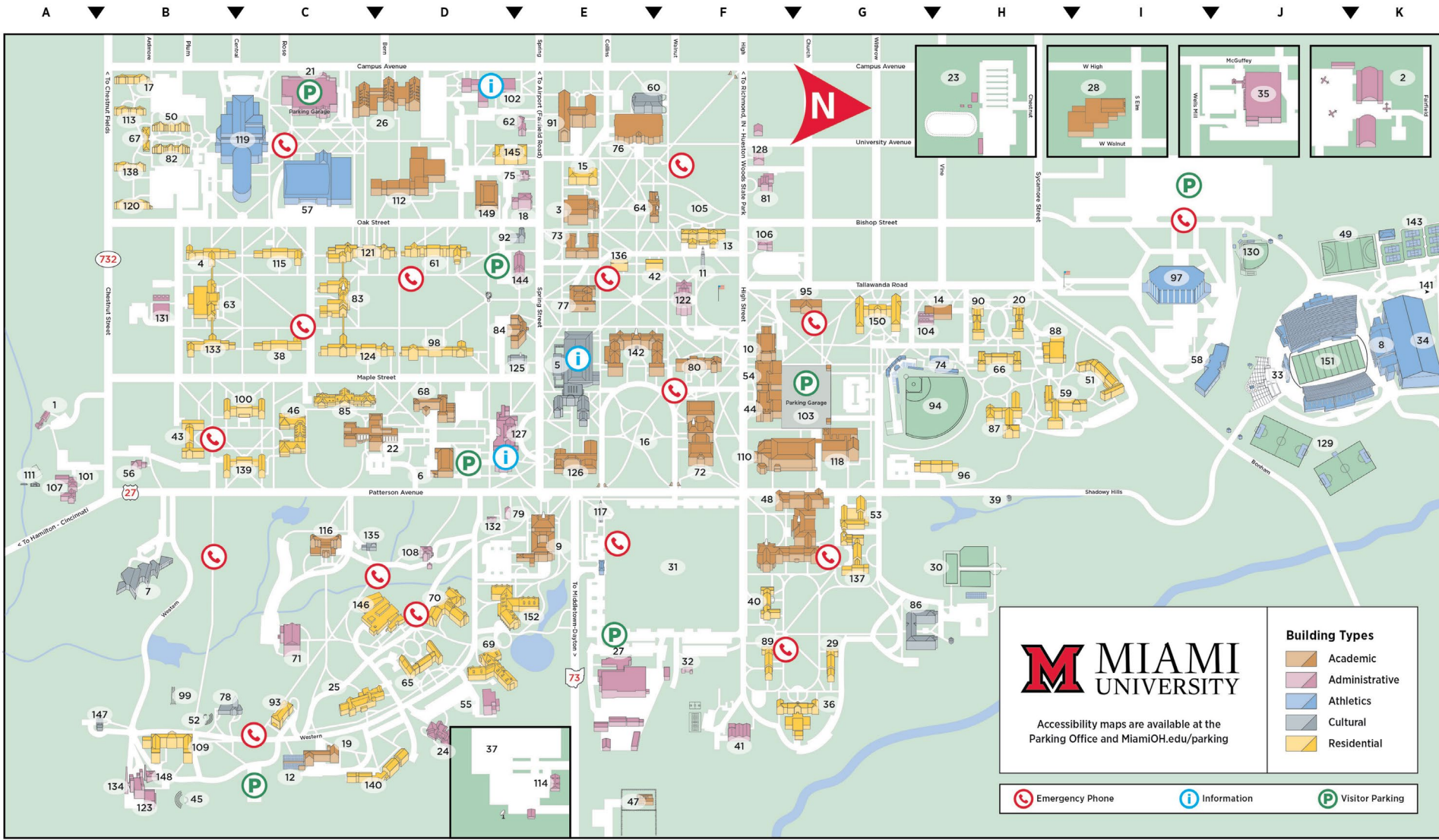
With over 1,500 student employees, Campus Experiences is the largest employer of students on campus. We take pride in offering a student employment experience that both engages and empowers each student.


Working as a student allows you to focus on academics while earning income, building skills, and making connections with professors, staff, and other students. Locations are convenient and scheduling has greater flexibility to work around your classes and exams. The National Center for Education Statistics has found that “students working 1-15 hours weekly earn higher GPAs” than students who do not work at all.

**Remember to bring original documents with you to the Human Resources office to complete the hiring process. A list of acceptable documents can be found at [USCIS.gov/i-9-central/form-i-9-acceptable-documents](https://uscis.gov/i-9-central/form-i-9-acceptable-documents).**

After you are assigned a Workday account in July or August, sign into your Workday account and search “find jobs.” Please email [studentemployment@MiamiOH.edu](mailto:studentemployment@MiamiOH.edu) with any questions.







**MIAMI UNIVERSITY**

Accessibility maps are available at the  
Parking Office and [MiamiOH.edu/parking](http://MiamiOH.edu/parking)

**Building Types**

- Academic
- Administrative
- Athletics
- Cultural
- Residential

- Emergency Phone
- Information
- Visitor Parking

1 Advancement Services (ASB)	A-3	20 Brandon Hall (BRN)	H-3	38 Dodds Hall (DOD)	C-3	58 Gross Student Athlete Development Ctr. (SDC)	I-3	76 King Library (KNG)	E-1	96 Miami Inn Hall (INN)	H-4	116 Presser Hall (PRS)	C-4	136 Stoddard Hall (STD)	E-2
2 Airport (WHA)	K-1	21 Campus Avenue Garage (CAG)	C-1	39 Dogwood Grove	H-4	60 Hahn Hall (HNE)	H-3	77 Kreger Hall (KRG)	E-3	97 Millett Assembly Hall (MIL)	I-2	117 Pulley Carillon, Vernon L.	E-4	137 Symmes Hall (SYM)	G-4
3 Alumni Hall (ALU)	E-2	22 Center for Performing Arts (CPA)	D-4	40 Dorsey Hall (DOR)	F-5	61 Hall Auditorium (HAL)	E-1	78 Kuller Chapel (KUM)	B-5	98 Minnich Hall (MIN)	D-3	118 Psychology Bldg. (PSY)	G-4	138 Tallawanda Hall (HCT)	B-2
4 Anderson Hall (AND)	B-2	23 Chestnut Fields (CFA)	H-1	41 East End (EST)	F-6	62 Hanna House (HAN)	D-2	79 Langstroth Cottage (LNG)	D-4	99 Molyneux-Western Bell Tower	B-5	119 Recreational Sports Ctr. (RSC)	C-1	139 Tappan Hall (TAP)	C-4
5 Armstrong Student Ctr. (ASC)	E-3	24 Child Development Ctr. (CDC)	D-6	42 Elliott Hall (ELT)	E-2	63 Hamilton Hall (HAM)	D-2	80 Laws Hall (LWS)	F-3	100 Morris Hall (MOR)	C-3	120 Reid Hall (HCR)	B-2	140 Thomson Hall (TOM)	D-6
6 Art Bldg. (ART)	D-4	25 Clawson Hall (CLW)	C-5	43 Emerson Hall (EMR)	B-2	64 Hanna House (HAN)	E-1	81 Lewis Place (LEW)	F-2	101 Murstein Alumni Ctr. (MUR)	A-4	121 Richard Hall (RIC)	D-2	141 Track, George L. Rider	K-2
7 Art Mus., Richard & Carole Cocks (AMU)	B-5	26 Clinical Health Sciences & Wellness (CHS)	D-1	44 Engineering Bldg. (EGB)	F-3	65 Harrison Hall (HAR)	B-2	82 Logan Lodge (HCL)	B-1	102 Nellie Craig Walker Hall (CAB)	D-1	122 Roudebush Hall (RDB)	F-3	142 Upham Hall (UPH)	E-3
8 Athletic Performance Ctr., Randy Gunlock Family (YPC)	K-3	27 Cole Service Bldg. (CSB)	E-5	45 Ernst Nature Theatre	B-6	66 Havighurst Hall (HRN)	E-2	83 MacCracken Hall (MAC)	C-2	103 North Campus Garage (NCG)	G-3	123 Sawyer Hall (SAW)	B-6	143 Varsity Tennis Courts	K-2
9 Bachelor Hall (BAC)	E-4	28 College @ Elm, Lee and Rosemary Fisher Innovation	I-1	46 Etheridge Hall (ETH)	E-6	65 Havighurst Hall (HAV)	D-5	84 MacMillan Hall (MMH)	C-3	104 North Chiller Plant	G-3	124 Scott Hall (SCT)	D-3	144 Warfield Hall (WAR)	E-2
10 Benton Hall (BEN)	F-3	29 Collins Hall (COL)	G-5	47 Equestrian Ctr., John W. Brown (USU)	E-6	66 Hepburn Hall (HEP)	H-3	85 Maplestreet Station (MSS)	C-3	105 Ogden Hall (OGN)	F-2	125 Sesquiennial Chapel (CHP)	E-3	145 Wells Hall (WEL)	D-1
11 Beta Bell Tower (BET)	F-2	30 Conrad Formal Gardens	H-4	48 Farmer School of Business (FSB)	F-4	67 Heritage Commons (HCC)	B-1	86 Marcum Conference Ctr. (MCC)	G-5	106 Old Mansie (OMN)	F-2	126 Shideler Hall (SHD)	E-4	146 Western Dining Commons (WDH)	C-5
12 Belk Greenhouse (BOY)	C-6	31 Cook Field	F-4	49 Field Hockey Complex	K-2	68 Hiestand Hall (HIS)	D-3	87 Marcum Hall (PRE)	H-3	107 Panuska Development Ctr. (MUR)	A-4	127 Shriver Ctr. (SHC)	D-3	147 Western Lodge (LNS)	B-6
13 Bell Tower Place (OGN)	F-2	32 Cook Place (COK)	F-5	50 Fisher Hall (HCF)	B-1	69 Hillcrest Hall (WSC)	D-5	88 Martin Dining Commons (MAR)	H-3	108 Patterson Place (PAT)	D-4	128 Simpson-Shade House (SHH)	F-1	148 Western Maint. Bldg. (WMB)	G-6
14 Billings Hall (BIL)	H-3	33 Cradle of Coaches Plaza	J-3	51 Flower Hall (FLW)	I-3	70 Hoedge Hall (WJA)	D-5	89 McBride Hall (MCB)	F-5	109 Peabody Hall (PEB)	B-6	129 Soccer Complex	J-4	149 Williams Hall (WH)	D-2
15 Bishop Hall (BIS)	E-2	34 Dauch of Coaches Plaza	K-3	52 Freedom Summer '64 Memorial	B-6	71 Hoyt Hall (HYT)	C-5	90 McFarland Hall (MCF)	H-3	110 Pearson Hall (PSN)	F-4	130 Softball Field	J-2	150 Withrow Hall (WTH)	B-3
16 Bishop Woods	E-4	35 Dauch Indoor Sports Ctr. (ISC)	K-3	53 Garden Commons (GCM)	G-4	72 Hughes Laboratories (HUG)	F-4	91 McGuffey Hall (MCG)	E-1	111 Peffer Memorial Park	A-4	131 South Chiller Plant	B-5	151 Yager Stadium (YES, YWS)	J-3
17 Blanchard House (HCB)	B-1	36 Dennis Culinary Support Ctr. (CSC)	J-1	54 Garland Hall (GAR)	F-3	73 Irvin Hall (IRV)	E-2	92 McGuffey Museum (MMU)	E-2	112 Phillips Hall (PHI)	D-2	132 Stanco House	D-4	152 Young Hall (YSB)	E-5
18 Bonham House (BON)	E-2	37 Dittmer Parking Lot	D-6	55 Geothermal Energy Plant (GEP)	D-5	74 Jay Hayden Baseball Support Ctr. (MKS)	H-3	93 McKee Hall (MCK)	C-5	113 Pines Lodge (HCP)	B-1	133 Stanton Hall (STN)	B-3		
19 Boyd Hall (BOY)	C-6			56 Gios Ctr. (GGB)	B-4	75 Joyner House (JOY)	E-2	94 McKie Field at Hayden Park (MKE)	H-3	114 Police Services Ctr. (PSC)	E-6	134 Steam Plant (MSP)	B-6		
				57 Goggin Ice Ctr. (IAR)	C-2			95 McVey Data Science (DSB)	G-3	115 Porter Hall (POR)	C-2	135 Stillman-Kelley Studio	C-4		

HAVE QUESTIONS?  
[MiamiOH.edu/campus-services](https://MiamiOH.edu/campus-services)

